



M belt s.r.o.
Kubátova 1240/6, CZ-370 04 České Budějovice

M belt s.r.o.

Tel.: 00420 381 521 162 / Fax: 00420 381 521 162
info@mbelt.cz www.dopravnipasy.eu



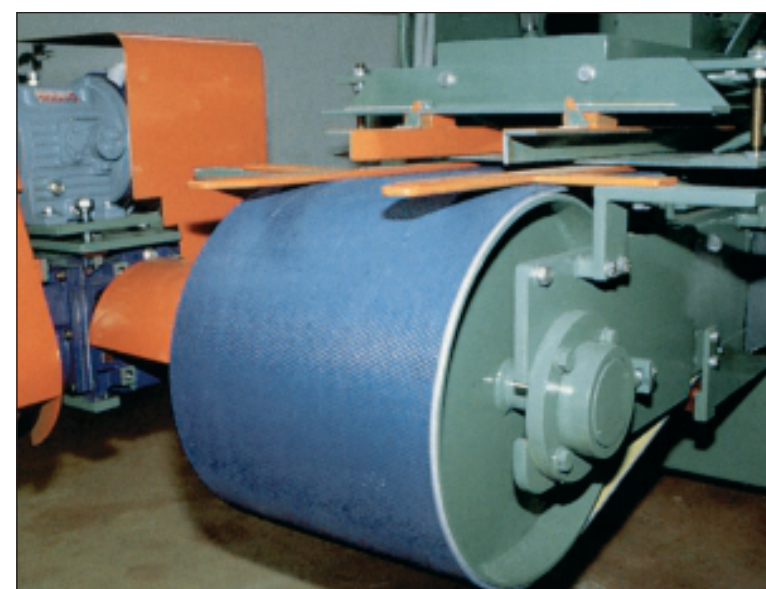
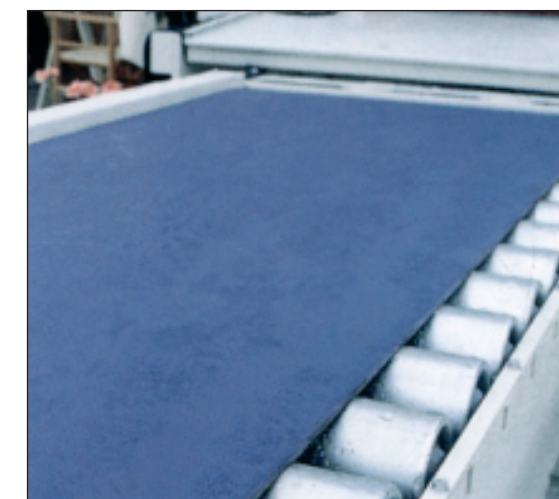
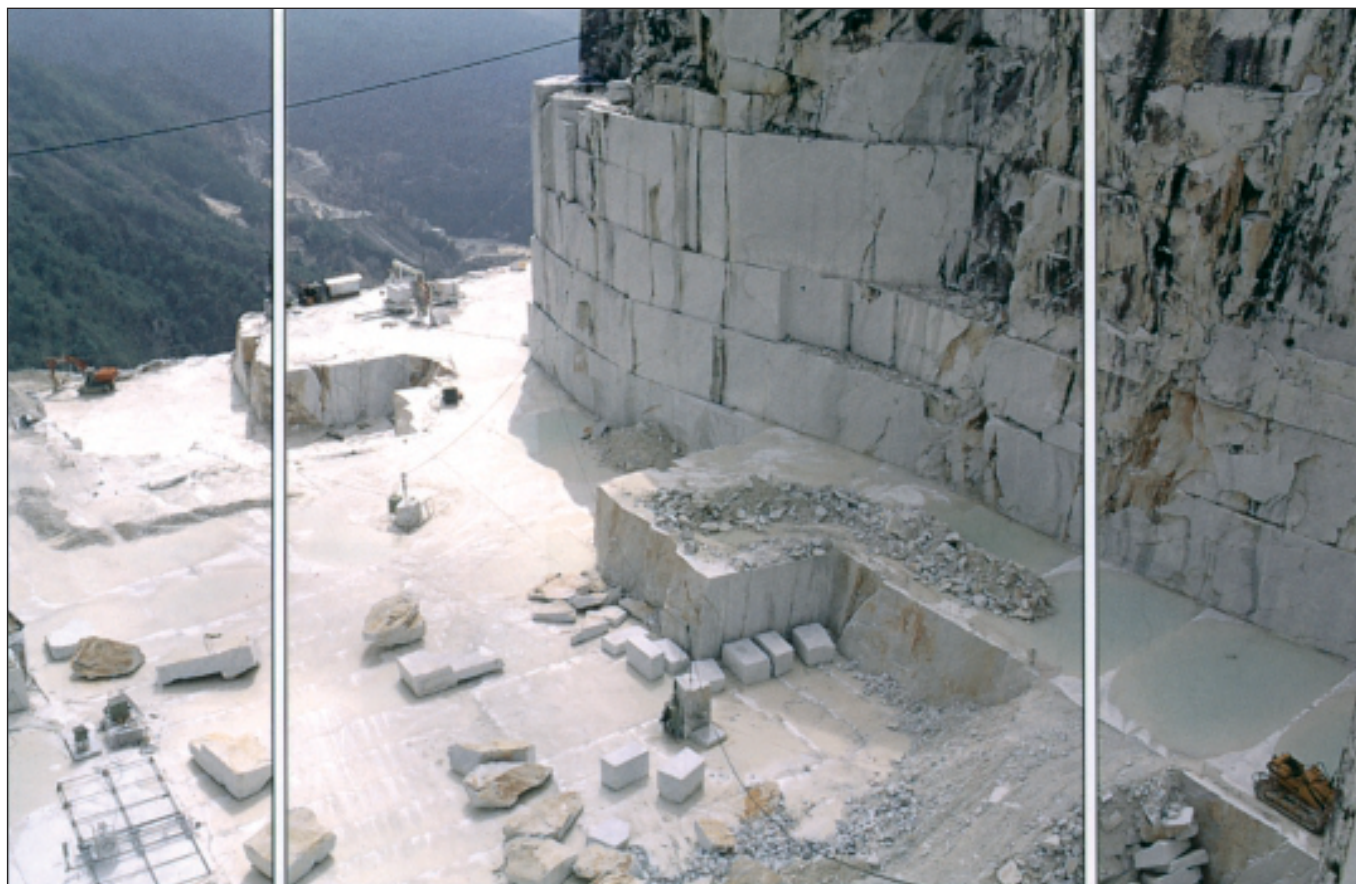
STONEBELT

**CONVEYOR BELTS for MARBLE, GRANITE, CERAMIC TILES
and FLAT TRANSMISSION BELTS for BLOCK CUTTING MACHINES**





CONVEYOR BELTS for MARBLE, GRANITE, CERAMIC TILES
and FLAT TRANSMISSION BELTS for BLOCK CUTTING MACHINES

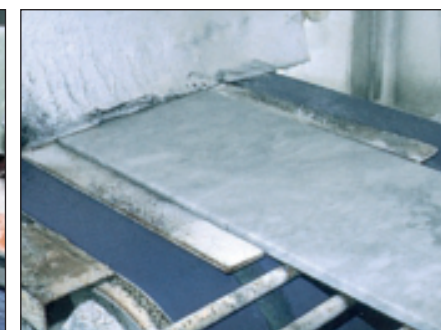
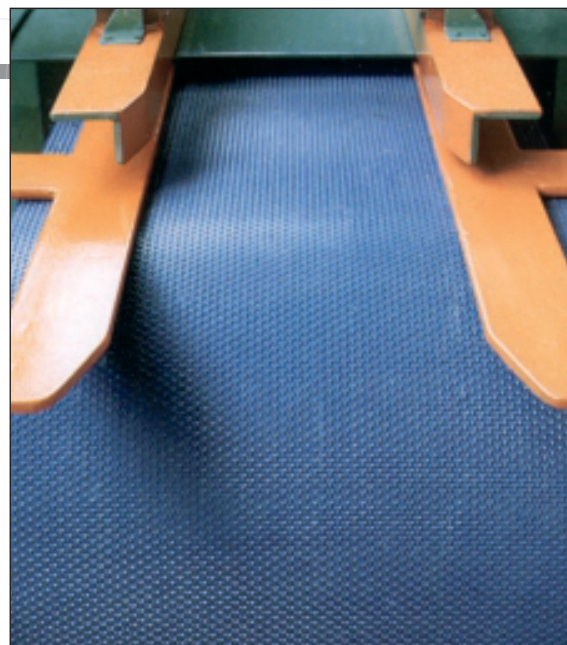




Years of work experience, devoted to the manufacturing of conveyor belts employed in various industry sectors, have convinced us that the quality and suitability of a belt becomes the prevailing and basic components of a machine or equipment, where the belt is part of it and is able to modify its operability or to determine its efficiency.

Consequently, we have worked such that MBELT range of conveyor belts, for the marble, granite and ceramic sector, is the right solution for solving any kind of problem.

This engagement, started at the dawn of the stone-sector mechanization, has made MBELT an acknowledged leader in the market.



The current range of conveyor belts, offers solutions to any problem of cutting, polishing and sizing of marble, granite, cement-marble, resin-marble and ceramic in any market thickness. In fact, the special structures of belt covers, some of them exclusively made and now considered as a market standard, together with specific base compounds allow an optimum grip with pieces to be worked in any operational circumstance. In addition, consideration should be given to the ample availability of 100% polyester fabric fibers, available according to needs. All MBELT belts have the sliding surface covered with a deep skimming of PVC or PU, according to the final utilization in the stone-sector.





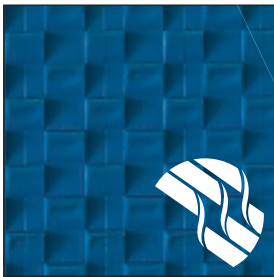
BELT STRUCTURES • ESTRUCTURAS



Y Patented medium-high profile with Y-design, tested and approved to guarantee an excellent result when processing irregular material high stability of products when being conveyed and for draining of water. The Y profile also allows for a high protection level against cutting and abrasion of the textile fabric.



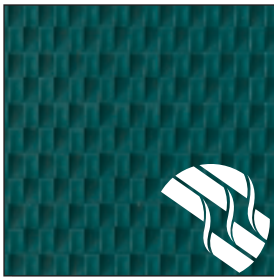
L121 BRETON Exclusively designed high, saw-tooth profile in two directions. The two-way aligned teeth avoid the slab from moving backwards.



H2 High profile with tooth-saw design, being an evolution of our classical H-profile. At both sides of the belt distance between teeth is wider, while at the centre part the teeth are reversed in double rows. In this way, maximum stability of the marble and granite slabs is guaranteed, also for thin and slightly bulged slabs.



V Thin, hemispherical profile, ideal for standard use on marble, granite, ceramics grinding, polishing and edge-polishing machines. The hemispheric profile allows the best adhesion to the workpiece, assuring the best downflow of water.



H Thick, saw-toothed profile, designed for application on machines for the polishing of large marble and granite slabs (production width of 2,200mm). Our standard belts are used by all main Italian equipment builders.



F Low rhomboidal profile ("snake skin"), especially designed to assure maximum adhesion of the conveyed product and drainage of water, which does therefore not remain on the belt surface. Applied on ceramic and granite machines.

APPLICATIONS

Chamfering machines, cross-cutting machines.

Standard polishing machines and edge-polishing machines for medium-low working loads

Polishing machines, edge-polishing machines and grinding machines for marble and granite for medium-high working loads, also with long interaxis

Polishing machines for terrazzo tiles and granite. High working loads and long interaxis.

Slab polishing machines for marble and granite, edge-polishing machines, where high-adhesion top cover is required (10 mm thickness and more).

U 35 V

U 61 V - U 91 V -
L 91 V - MG 101 Y

U 91 V - L 91 V -
MG 101 Y

U 121/4F

MG 101 Y -
MG 101 H2 -
L 121 - L 91 V

BELT CHARACTERISTICS • CARACTERISTICAS DE LA BANDA

SERIE SERIES	SIGLA TYPE	Top Cover Cubierta Superior		Fabric Tejido		Total thickness mm/in	Permissible working load N/mm-lbf/in	Pull per 1% N/mm - lbf/in	Minimal roller diameter Diametro minimo de los rodillos	
		Material	Color	Weft	N. of plies					
		Material	Color	Trama	N. de capas	Grosor total mm/in	Carga maxima de trabajo N/mm - lbf/in	Carga al 1% de elongacion N/mm - lbf/in	Flexion A mm/in	Counterflex. Contraflex. B mm/in
U	U 35/V	PVC U	GREEN	R	3	4,9 (0,193)	30 (171,3)	18 (102,8)	150 (5,9)	180 (7,1)
	U 61/V	PVC U	SAMPLA	F	3	6,5 (0,256)	60 (342,6)	40 (228,4)	250 (9,8)	300 (11,8)
	U 91/V	PVC U	VERDE	F	3	7,0 (0,276)	90 (513,9)	50 (285,5)	350 (13,8)	400 (15,7)
	U 121/4F	PVC U	SAMPLA	F	4	8,9 (0,350)	120 (685,2)	70 (399,7)	450 (17,7)	500 (19,7)

Hardness 75° Shore A. PVC cover with excellent resistance to abrasion and cutting. Residence to water, also with mineral oils, hydrocarbons, cleaning products.

L	L 91/V	PVC L	GREEN	F	3	7,0 (0,276)	90 (513,9)	50 (285,5)	350 (13,8)	400 (15,7)
	L 121/4/V	PVC L	SAMPLA VERDE	F	4	9,1 (0,358)	120 (685,2)	70 (399,7)	450 (17,7)	500 (19,7)

Hardness 55° Shore A. Elastic flexible and adhesive PVC cover with high friction coefficient. Resistance to water and used where high adhesion between belt surface and product is required.

MG	MG 101/H2	PVC L	BLUE	F	4	11,4 (0,449)	90 (513,9)	40 (228,4)	350 (13,8)	400 (15,7)
	MG 101/Y	PVC L	SAMPLA AZUL	F	4	7,5 (0,295)	90 (513,9)	70 (399,7)	350 (13,8)	400 (15,7)

The MG 101 Y and MG 101 H2 belts have a PVC top cover with 45° Shore A hardness. Features are: high friction coefficient and belts can be used for applications with presence of water, mineral oils and detergents. The 4-ply polyester textile carcass, the base for all belts of the MG range, allows for a high dimensional stability, no edge-raising and very low elongation factor.

Our belts can be supplied, as follows: endless by vulcanization, open with ends prepared for vulcanization on the machine on-site; endless or prepared-ends with longitudinal containing guides and vulcanized strips in all standard size (rectangular and trapezoidal).

FLAT TRANSMISSION BELTS FOR BLOCK CUTTING MACHINES CHARACTERISTICS

SERIE SERIES	SIGLA TYPE	Top Cover Cubierta Superior		Bottom Cover Cubierta Inferior		Total thickness mm/in		Minimal diameter mm - in	Pull per 1% N/mm - lbf/in	Production width. mm - in
		Friction factor	Material	Material	Friction factor					
		Coefficiencia de friccion	Material	Material	Coefficiencia de friccion	Grosor total mm/in		Diametro minimo mm - in	Carga al 1% de elongacion N/mm - lbf/in	Ancho de produccion mm - in
F	F 200/44	0,25	FABRIC TELA	LEATHER CUERO	0,4	4,4 (0,173)	4,5 (0,922)	200 (7,874)	20,0 (114,203)	520 (20,47)
	F 300/54	0,25	FABRIC TELA	LEATHER CUERO	0,4	5,4 (0,213)	5,6 (1,147)	300 (11,811)	30,0 (171,305)	520 (20,47)

Flat transmission belts with leather and nylon lamina. The leather surface allows for an excellent grip between belt and pulley, also with presence of water, oil and powder. The nylon lamina provides constant and homogeneous power transmission, giving also protection during overloads.

P	P 100/21	0,25	FABRIC TELA	ELASTOMER ELASTOMERO	0,7	2,1 (0,083)	2,1 (0,430)	90 (3,543)	10,0 (57,102)	520 (20,47)
	P 150/26	0,25	FABRIC TELA	ELASTOMER ELASTOMERO	0,7	2,6 (0,102)	2,7 (0,553)	135 (5,315)	15,0 (85,652)	520 (20,47)

Flat transmission belts with synthetic rubber and nylon lamina. The synthetic rubber grip surface is a good alternative to the traditional surface of chrome leather: resistance to abrasion, oils, water, powder and provides for a high friction coefficient, also ideal for applications with high pressure and overloads.